



SPINFLOW

Version 4.1.X

Technical Specification

Spinflow Windows GUI - v4.0.0

SPINFLOW SPINJET PRINTER SERVER TECHSAGE

Home Process Queue Settings Printers Setup Global Configuration Others

Input queues

Queue	File name	Input	Destination	Size (MB)	Progress
Work&Turn		Hot folder	C:\Documents and Settings\		●
Work&Tumble	PeffectetedJob_NormalSize_sheet1	Hot folder	C:\Documents and Settings\	61.36/190.27	● <div style="width: 32%;"></div> 32%
Single-Sided		Hot folder	C:\Documents and Settings\		●
Same jobx2		Hot folder	C:\Documents and Settings\		●

Jobs queue

Queue	File name	Incomming time	Input	State
Work&Tumble	PeffectetedJob_NormalSize_sheet1	19.12 03:40:23	Hot folder	Wait for next

Processing plane open
Processing second page: 80845.Sig 001 AST.1A.CMYK.TIF, from: Wor

Print queue

Queue	File name	Output	Output mode	Processed time	Copy	Progress	Cancel	Preview
Work&Tumble	390_35-A.TIF	SJ4000	[LPR]: 192.168.1.228	19.12 03:37:53	✓	OK		
Single-Sided	Signle sided CD size s	SJ4000	[LPR]: 192.168.1.228	19.12 03:21:01	✓	OK		

Archive

Queue	File name	Output	Output mode	Printed time	Result	Preview
Work&Tumble	390_35-A.TIF	SJ4000	[LPR]: 192.168.1.228	19.12 03:37:53	✓	OK
Single-Sided	Signle sided CD size s	SJ4000	[LPR]: 192.168.1.228	19.12 03:21:01	✓	OK

Submit Job

Jobs Info

Logs

copyright 2006 [Techsag](#) SPINFLOW logo is trademark of Tech [All rights reserved](#) [Use this subject to license terms](#)



The SPINFLOW software

– the SPINJET PRINTER SERVER - is the data interface between host Pre-Press Systems (RIPs or Workflow systems), Signage and Poster printing production servers on one side, and the SPINJET double-sided proofing systems on the other side.

Process

Capturing Data: Data is captured from a range of host systems as defined in input file methods. The queue method ensures front and back impositions from different operators cannot be inadvertently mixed up. Advance page matching functionality facilitates high degree of automated processing.

Processing: Single or paired jobs are registered and orientated for correct alignment, ink reduction may be applied. Tag line with date and time may be added.

Print to SPINJET: Output jobs to Printer in register, auto-rotating the job to minimise paper wastage, and controlling the SPINJET for single-sided or double-sided proofing.

Features

- Multiple input queues for different systems and users.
- TIFF and HP RTL native input files formats.
- Input via Hot Folder, Manually Selected file, TCP/IP-RAW, TCP/IP-LPD, FTP
- Output via TCP/IP-RAW, Windows Driver, TCP/IP-LPD, Archive Only.
- Parallel job receiving, processing and printing, using many HP printers simultaneously.
- Set-ups different job types: Work & Turn, Single-Sided, Work & Tumble, Sheet Work.
- Auto centering of the front and back impositions.
- Auto rotation of jobs to save paper (auto fit /best fit option).
- "n" Jobs saved for fast reprint.
- Ink Reduction.
- Centering of impositions onto paper.
- Onscreen thumbnail views for fast and accurate job recognition.
- Transparent scalable preview for double-sided adjustment view and correction.
- Web-based user server access.
- Wildcards page matchings

- Built-in Wizards and Tutorials
- Built-in job and skew Measurement Tools
- Load Balancing (Extension. Must be purchased separately!)

Software requirements:

- MS Windows operating system, Windows XP Professional or later.
- MS .Net Framework Runtime 1.1 - you should have it in your system if you are using Windows Update. Otherwise you can download it from: http://msdn.microsoft.com/netframework/downloads/framework1_1/ or another MS page.
- One of many popular browsers (Internet Explorer, Firefox, Mozilla) with enabled popup windows (for WebGUI only).

Hardware requirements:

PC (not included!) with *minimum* requirements:

- Intel Pentium IV 1.6 GHz Processor
- 512 Mb RAM
- 80 GB Hard drive
- PCI 100 Base/T Network Card

PC (not included!) with *recommended* requirements:

- Intel Pentium IV 3.0 GHz Processor
- 1024 Mb RAM
- 80 GB Hard drive
- PCI 100 Base/T Network Card

Input file methods

Hot Folder:

Files sent from remote systems to hot folder for spooling into SPINFLOW queues.

TCP/IP:

LPD 515: Networked print server.

Telnet 9100: Raw Internet protocol printer destination

FTP: Active mode only



File formats supported:

RTL:

- 4 color CMYK 32 bit
- 3 color CMY 24 bit
- 3 color RGB 24 bit
- 6 color CMYKLcLm 48 bit
- Files with Index color (in all of the above formats) and own palette, max 8 bit per index

TIFF Contone:

- CMYK 32 bit
- RGB 24 bit
- Greyscale 8 bit
- TIFF with User Palette

Output file methods

Printing mode:

- Single Sided Job
- Double Sided Job
- Double Sided Job – First Page x 2

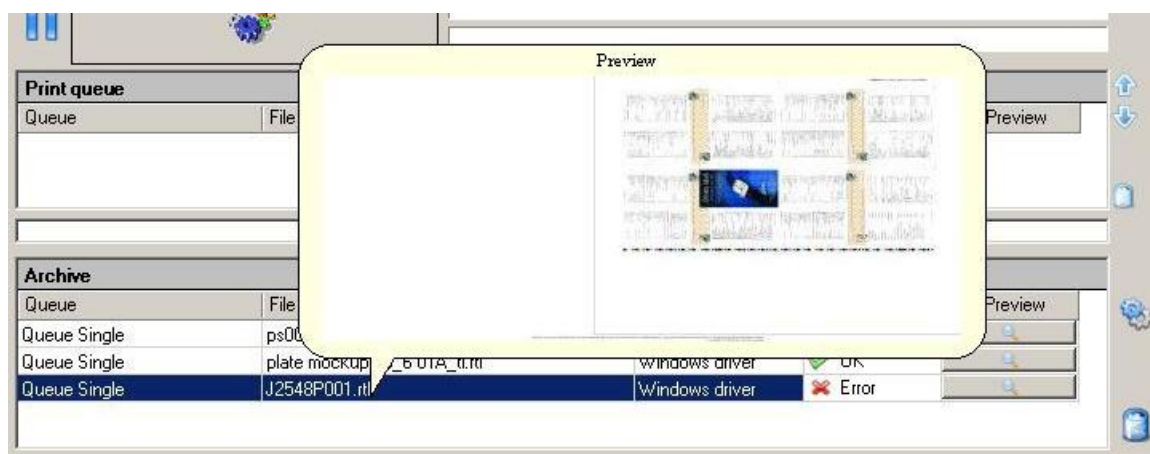
Output mode:

- TCP/IP:
- LPD 515: Networked print server.
- Telnet 9100: Raw Internet protocol printer destination
- Archive Only

Operating system

- Windows XP Professional or later.

TECHSAGE ®



Learn more at www.spinflow.dk and www.spinjet.com